

## Teton

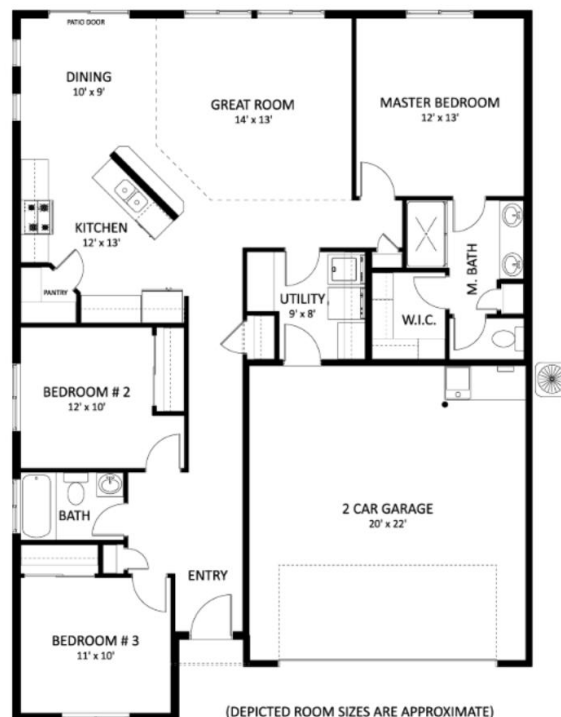


3 Bedrooms  
2 Bathrooms  
2 Garage  
1,405 SQFT  
Price \$341,499  
Status: Active  
Available: June 2024  
1380 Dawn St Weiser ID, Lot SP016001

### About The Model

Located in the Sundance Pointe Subdivision on a desirable corner lot, this home highlights the knotty alder cabinets, granite countertops, full tiled backsplash, and stainless steel appliances in the kitchen and the dual vanities and large walk-in closet in the master suite. The outside features front sod, rear seed, and full auto sprinklers with delivered pressurized irrigation which allows for major savings on your water bill. Save on your heating with bill with Natural Gas. **\*\*\*Photos are Similar\*\*\***

... See site for more info.





**Agile Homes**

**208-452-5555**  
**info@agilehomes.com**