

## Ashton

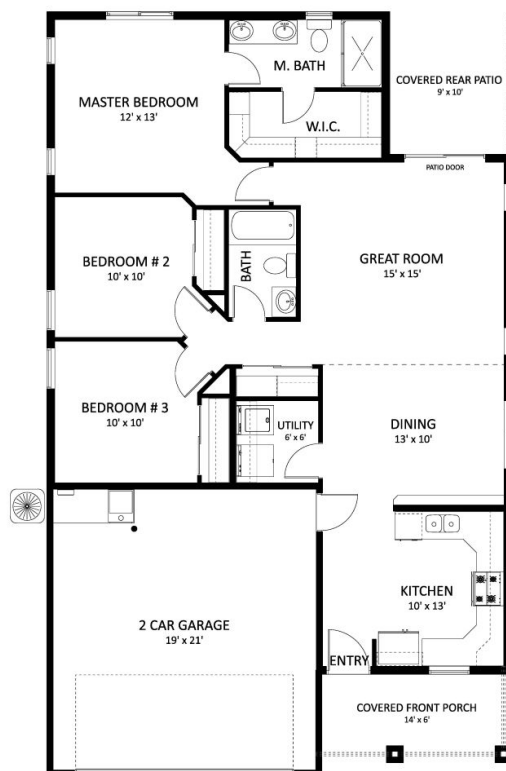
PHOTO SIMILAR



3 Bedrooms  
2 Bathrooms  
2 Garage  
1,288 SQFT  
Price \$331,549  
Status: Active  
Available: June 2024  
1385 Dawn St Weiser ID, Lot SP007002

### About The Model

The Ashton is an efficient, charming home that gives you freedom, both in time and money to enjoy life. On sunny mornings, enjoy coffee and fresh air on your back covered porch. The lot offers RV parking with a concrete approach, RV gate, and compacted road mix behind the gate. Save on water bills with delivered pressurized irrigation and on heating bills with Natural Gas. **\*\*\*Photos are Similar\*\*\***



(DEPICTED ROOM SIZES ARE APPROXIMATE)